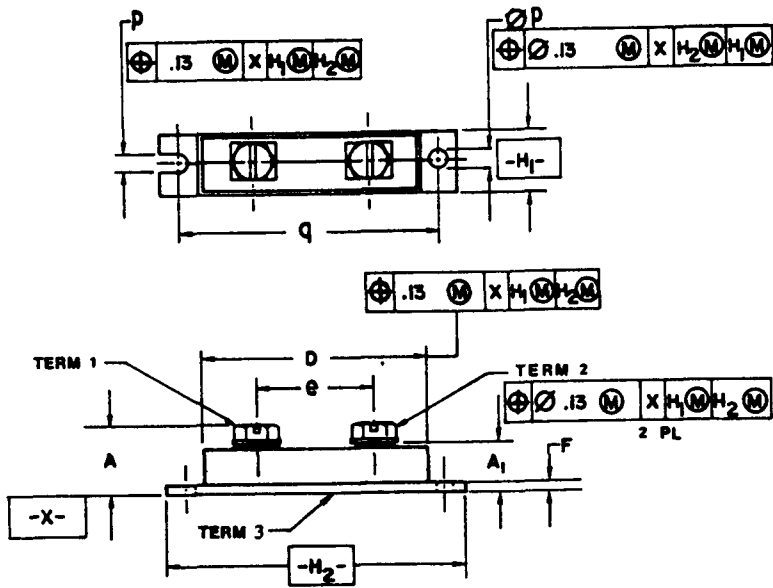


NOTES:

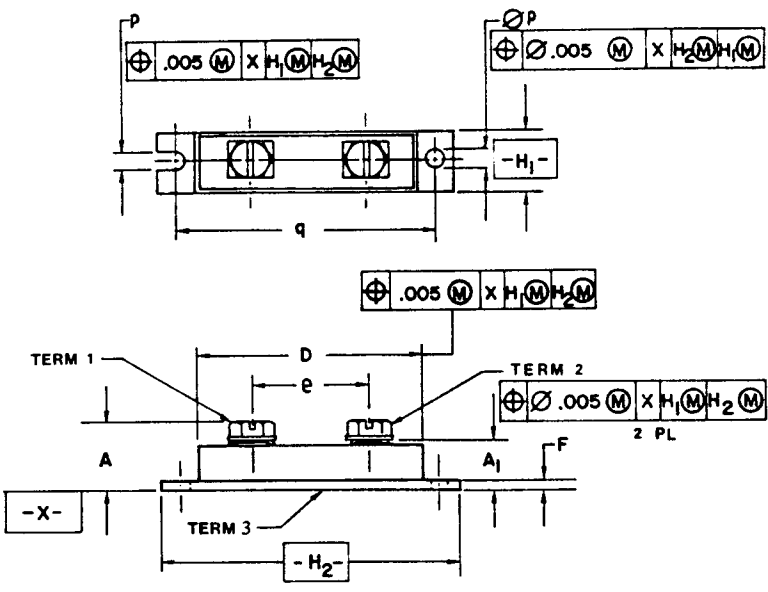


1. REFER TO APPLICABLE SYMBOL LIST JEDEC PUBLICATION NO. 95.
2. DIMENSIONING AND TOLERANCING PER ANSI Y14.5, 1973.
3. TERMINALS AND SCREWS: THREAD SIZES AND LENGTHS ARE OPTIONAL AND SHALL BE WITHIN THE LIMITS DEFINED BY DIMENSION A AND THE MAXIMUM OF DIMENSION H₁.
4. CONTOUR OF TERMINALS 1 & 2 IS OPTIONAL.
5. DIMENSION "A" DOES NOT INCLUDE LUGS OR CABLE ASSEMBLIES.
6. CHAMFER ON MOUNTING HOLES OPTIONAL.
7. DIMENSIONS H₁ AND H₂ ARE DATUM FEATURES.
8. -X- IS DATUM SURFACE. (SEATING PLANE)
9. CONTROLLING DIMENSION: INCH.
10. VARIATION "AB" HAS TWO MOUNTING HOLES.

SYMBOL	VARIATIONS (ALL DIMENSIONS SHOWN IN MILLIMETERS)												
	AA			AB			MIN.	MAX.	NOTE	MIN.	MAX.	NOTE	
	MIN.	MAX.	NOTE	MIN.	MAX.	NOTE							
A	20.43	23.54	3,5	20.43	23.54	3,5							
A ₁	14.61	15.87		14.61	15.87								
D	57.15	66.80	7	57.15	66.80	7							
e	34.925 BSC			34.925 BSC									
F	3.03	3.35		3.03	3.35								
H ₁	17.78	20.32	7	17.78	20.32	7							
H ₂	87.63	92.71	7	87.63	92.71	7							
dp	6.35	6.85	6	7.14	7.76	6							
p	6.35	6.85		-	-								
q	80.01 BSC			80.01 BSC									
NOTE	1,2,4,8			1,2,4,8,10									
REF.	JC 11.2 Item 105												
ISSUE	A - MARCH 1982												
JEDEC SOLID STATE PRODUCT OUTLINES				TITLE FLANGE MOUNTED FAMILY (Rectangular Base)				ISSUE B	DATE 9/27/84	TO-244			

NOTES:

1. REFER TO APPLICABLE SYMBOL LIST JEDEC PUBLICATION NO. 95.
2. DIMENSIONING AND TOLERANCING PER ANSI Y14.5, 1973.
3. TERMINALS AND SCREWS: THREAD SIZES AND LENGTHS ARE OPTIONAL AND SHALL BE WITHIN THE LIMITS DEFINED BY DIMENSION A AND THE MAXIMUM OF DIMENSION H₁.
4. CONTOUR OF TERMINALS 1 & 2 IS OPTIONAL.
5. DIMENSION "A" DOES NOT INCLUDE LUGS OR CABLE ASSEMBLIES.
6. CHAMFER ON MOUNTING HOLES OPTIONAL.
7. DIMENSIONS H₁ AND H₂ ARE DATUM FEATURES.
8. -X- IS DATUM SURFACE. (SEATING PLANE)
9. CONTROLLING DIMENSION: INCH.
10. VARIATION "AB" HAS TWO MOUNTING HOLES.



VARIATIONS (ALL DIMENSIONS SHOWN IN INCHES)

SYMBOL	AA		NOTE	AB		NOTE	MIN.	MAX.	NOTE	MIN.	MAX.	NOTE
	MIN.	MAX.		MIN.	MAX.							
A	.804	.927	3,5	.804	.927	3,5						
A ₁	.575	.625		.575	.625							
D	2.25	2.63	7	2.25	2.63	7						
e	1.375 BSC			1.375 BSC								
F	.119	.132		.119	.132							
H ₁	.70	.80	7	.70	.80	7						
H ₂	3.45	3.65	7	3.45	3.65	7						
φp	.25	.27	6	.28	.31	6						
p	.25	.27		-	-							
q	3.15 BSC			3.15 BSC								

NOTE	1,2,4,8	1,2,4,8,10
REF.	JC 11.2 - ITEM 105	
ISSUE	A - MARCH 1982	

JEDEC SOLID STATE PRODUCT OUTLINES	TITLE FLANGE MOUNTED FAMILY (Rectangular Base)	ISSUE B	DATE 9/27/84	T0-244
--	--	------------	-----------------	--------