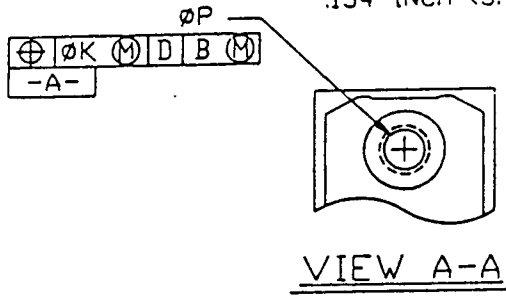
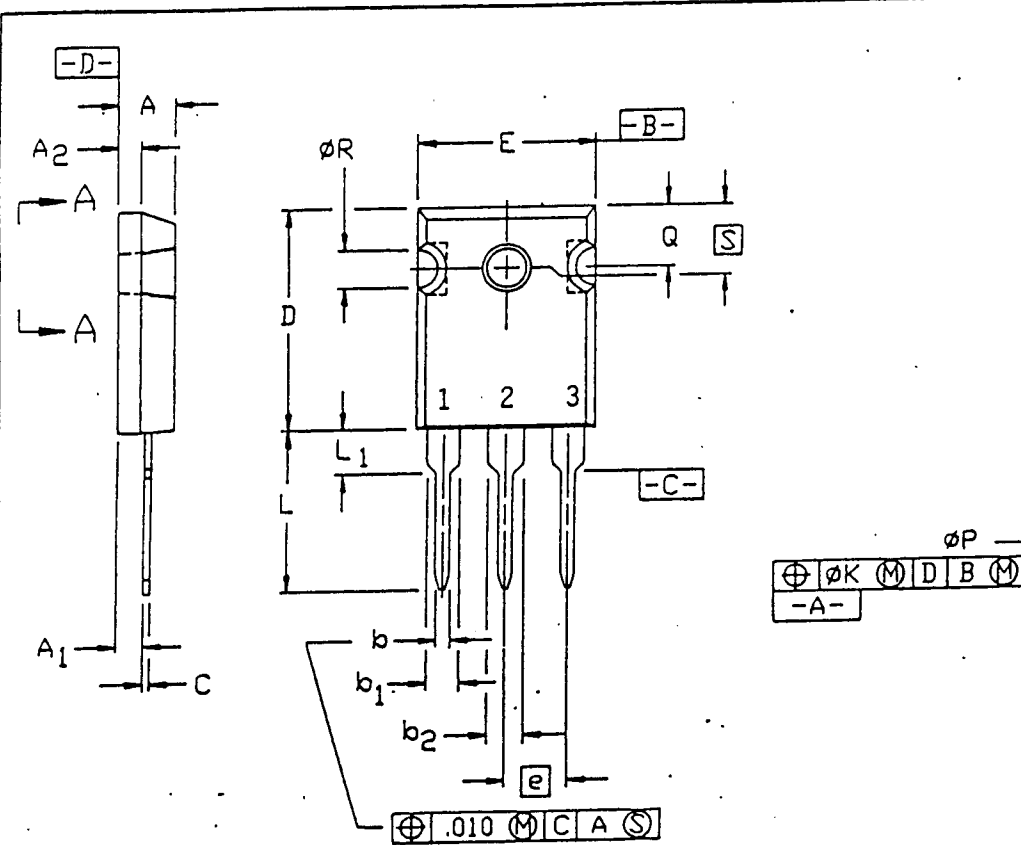


- NOTES:
1. REFER TO APPLICABLE SYMBOL LIST.
 2. DIMENSIONING AND TOLERANCING PER ANSI Y14.5M-1982.
 3. MAXIMUM RADIUS OF .050 ON ALL BODY EDGES AND CORNERS.
 4. LEAD DIMENSIONING UNCONTROLLED IN L₁.
 5. CONTROLLING DIMENSION: METRIC.
 6. CONTOUR OF SLOT $\varnothing R$ OPTIONAL.
 7. $\varnothing P$ TO HAVE A MAXIMUM DRAFT ANGLE OF 15° TO TOP OF PART WITH A MAXIMUM HOLE SIZE OF .154 INCH (3.91 MM).

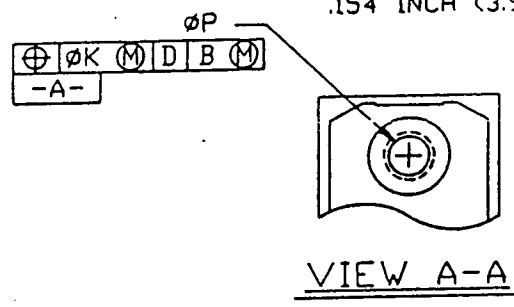


VIEW A-A

SYMBOL	VARIATIONS (ALL DIMENSIONS SHOWN IN INCHES)											
	AA		NOTE	AB		NOTE	AC		NOTE	AD		NOTE
	MIN.	MAX.		MIN.	MAX.		MIN.	MAX.		MIN.	MAX.	
A	.185	.209		.175	.185		.185	.209		.185	.209	
A ₁	.087	.102		.090	.115		.087	.102		.087	.102	
A ₂	.059	.098	4	.054	.064	4	.059	.098	4	.059	.098	4
b	.040	.055		.046	.056		.040	.055		.040	.055	
b ₁	.079	.094	4	.065	.083	4	.079	.094	4	.065	.084	4
b ₂	.118	.133		-	-		.118	.133		.113	.123	4
C	.016	.031		.018	.022		.016	.031		.016	.031	
D	.776	.799		.800	.820		.776	.799		.819	.845	
E	.602	.625		.610	.625		.602	.625		.610	.640	
e	.215 BSC.			.219 BSC.			.215 BSC.			.215 BSC.		
L	.559	.582		.625	.635		.559	.582		.780	.800	
L ₁	.146	.169	4	.137	.147	4	.146	.169	4	.177	.177	4
$\varnothing P$.118	.133	7	.126	.135	7	.140	.143	7	.140	.144	7
Q	.209	.224		.292	.302		.209	.224		.212	.244	
$\varnothing R$.178	.216	6	.135	.145	6	.178	.216	6	.170	.216	6
S	.217 BSC.			.215 BSC.			.217 BSC.			.242 BSC.		
$\varnothing K$.010			.010			.010			.025		
NOTE	1 2 3 5			1 2 3 5			1 2 3 5			1 2 3 5 7		
REF.				ITEM 124			ITEM 127			ITEM 10-261/266		
ISSUE												
JEDEC SOLID STATE PRODUCT OUTLINES			TITLE: FLANGE-MOUNTED HEADER FAMILY				ISSUE D		DATE 6-90		SHEET 1 of 4	
							TO-247					



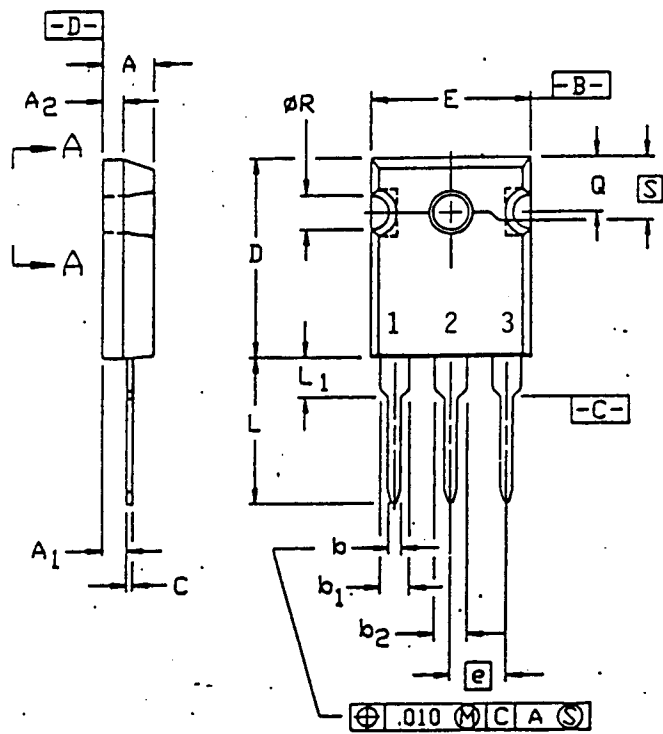
- NOTES:
1. REFER TO APPLICABLE SYMBOL LIST.
 2. DIMENSIONING AND TOLERANCING PER ANSI Y14.5M-1982.
 3. MAXIMUM RADIUS OF .050 ON ALL BODY EDGES AND CORNERS.
 4. LEAD DIMENSIONING UNCONTROLLED IN L₁.
 5. CONTROLLING DIMENSION: METRIC.
 6. CONTOUR OF SLOT ϕR OPTIONAL.
 7. ϕP TO HAVE A MAXIMUM DRAFT ANGLE OF 1.5° TO TOP OF PART WITH A MAXIMUM HOLE SIZE OF .154 INCH (3.91 MM).



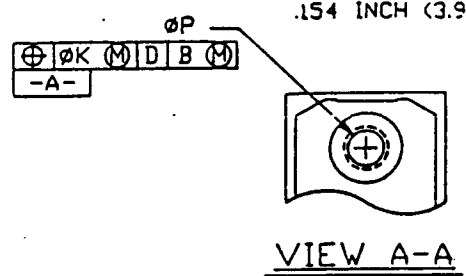
VARIATIONS (ALL DIMENSIONS SHOWN IN MILLIMETERS)

SYMBOL	AA		NOTE	AB		NOTE	AC		NOTE	AD		NOTE
	MIN.	MAX.		MIN.	MAX.		MIN.	MAX.		MIN.	MAX.	
A	4.7	5.3		4.45	4.7		4.7	5.3		4.7	5.3	
A ₁	2.2	2.6		2.3	2.9		2.2	2.6		1.50	2.49	
A ₂	1.5	2.5	4	1.37	1.63	4	1.5	2.5	4	2.2	2.6	4
b	1.0	1.4	4	1.17	1.42	4	1.0	1.4	4	1.0	1.4	4
b ₁	2.0	2.4	4	1.65	2.1	4	2.0	2.4	4	1.65	2.13	4
b ₂	3.0	3.4		-	-		3.0	3.4		2.87	3.12	4
C	.4	.8		.46	.56		.4	.8		.4	.8	
D	19.7	20.3		20.3	20.85		19.7	20.3		20.80	21.46	
E	15.3	15.9		15.5	15.85		15.3	15.9		15.75	16.26	
e	5.45 BSC.			5.56 BSC.			5.45 BSC.			5.45 BSC.		
L	14.2	14.8		15.85	16.15		14.2	14.8		19.81	20.32	
L ₁	3.7	4.3	4	3.5	3.73	4	3.7	4.3	4	4.50	4.50	4
ϕP	3.0	3.4	7	3.18	3.43	7	3.55	3.65	7	3.55	3.65	7
Q	5.3	5.7		7.4	7.65		5.3	5.7		5.4	6.2	
ϕR	4.5	5.5	6	3.45	3.7	6	4.5	5.5	6	4.32	5.49	6
S	5.5 BSC.			5.45 BSC.			5.5 BSC.			6.15 BSC.		
ϕK	.25			.25			.25			.64		
NOTE	1 2 3 5			1 2 3 5			1 2 3 5			1 2 3 5 7		
REF.				ITEM 124			ITEM 127			ITEM 10-261/266		
ISSUE												

JEDEC SOLID STATE PRODUCT OUTLINES	TITLE: FLANGE-MOUNTED HEADER FAMILY	ISSUE D	DATE 6-90	TO-247	SHEET 2 of 4
--	---	------------	--------------	--------	-----------------------



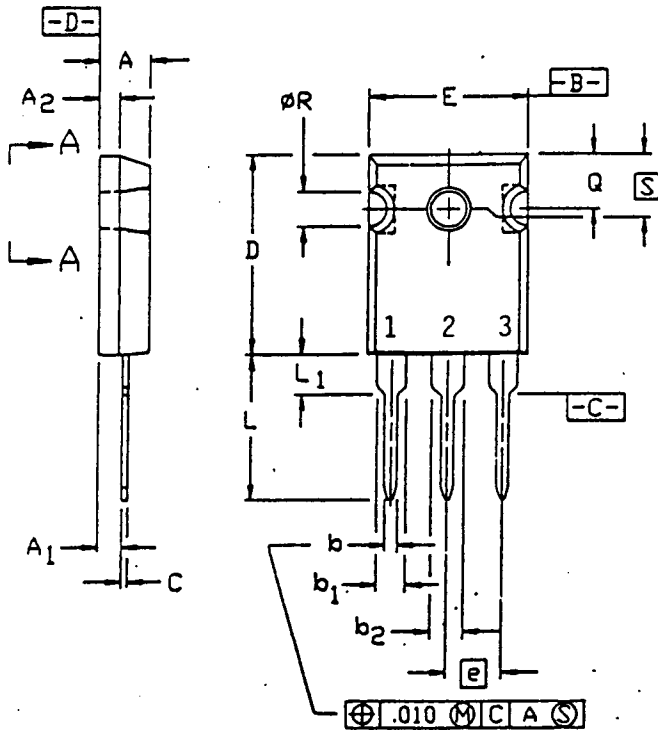
- NOTES:
1. REFER TO APPLICABLE SYMBOL LIST.
 2. DIMENSIONING AND TOLERANCING PER ANSI Y14.5M-1982.
 3. MAXIMUM RADIUS OF .050 ON ALL BODY EDGES AND CORNERS.
 4. LEAD DIMENSIONING UNCONTROLLED IN L₁.
 5. CONTROLLING DIMENSION: METRIC.
 6. CONTOUR OF SLOT ØR OPTIONAL.
 7. ØP TO HAVE A MAXIMUM DRAFT ANGLE OF 1.5° TO TOP OF PART WITH A MAXIMUM HOLE SIZE OF .154 INCH (3.91 MM).



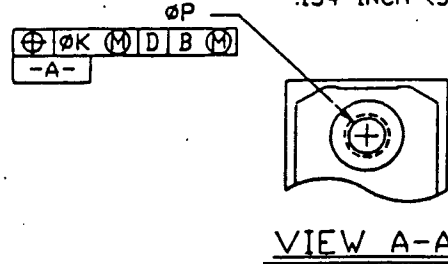
VARIATIONS (ALL DIM SHOWN IN INCHES)

	AE		
	MIN	MAX	
A	.19	.21	
A1	.10	.11	
A2	.07	.08	
b	.04	.06	4
b1	.07	.09	4
b2	.12	.13	
C	.02	.03	
D	.80	.82	
E	.61	.63	
e	.215 BSC		
L	.61	.63	
L1	.12	.13	4
ØP	.14	.15	7
Q	.28	.30	
ØR	.13	.15	6
S	.209 BSC		
ØK	.01		
NOTE	1, 2, 3, 5		
REF.	10-287		
ISSUE	D		

JEDEC SOLID STATE PRODUCT OUTLINES	TITLE:	ISSUE	DATE:	SHEET
	FLANGE-MOUNTED HEADER FAMILY	D	6-90	
			TO-247	



- NOTES:
1. REFER TO APPLICABLE SYMBOL LIST.
 2. DIMENSIONING AND TOLERANCING PER ANSI Y14.5M-1982.
 3. MAXIMUM RADIUS OF .050 ON ALL BODY EDGES AND CORNERS.
 4. LEAD DIMENSIONING UNCONTROLLED IN L₁.
 5. CONTROLLING DIMENSION: METRIC.
 6. CONTOUR OF SLOT ØR OPTIONAL.
 7. ØP TO HAVE A MAXIMUM DRAFT ANGLE OF 1.5° TO TOP OF PART WITH A MAXIMUM HOLE SIZE OF .154 INCH (3.91 MM).



VARIATIONS (ALL DIM SHOWN IN MILLIMETERS)

	AE		
	MIN	MAX	
A	4.7	5.3	
A1	2.5	2.9	
A2	1.7	2.0	
b	1.0	1.4	4
b1	1.8	2.2	4
b2	3.0	3.4	
C	.4	.7	
D	20.4	20.9	
E	15.4	16.0	
e	5.45 BSC		
L	15.5	16.1	
L1	3.1	3.4	4
ØP	3.5	3.7	7
Q	7.2	7.5	
ØR	3.3	3.8	6
S	5.30 BSC		
ØK	.25		

NOTE	1, 2, 3, 5
REF.	10-287
ISSUE	D

JEDEC SOLID STATE PRODUCT OUTLINES	TITLE:	ISSUE	DATE	TÖ-247	SHEET
	FLANGE-MOUNTED HEADER FAMILY	D	6-90		4 of 4